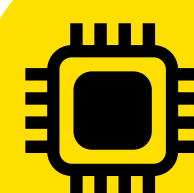


# OPEN PLUGGABLE SPECIFICATION (OPS)



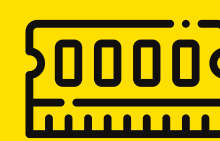
## Specifications :

Processor System	CPU Intel® Alder Lake-P Processor
Chipset	Intel SOC design
Graphics	Intel® Iris® Xe Graphics
Display	1 x DP1.4 (8K30Hz) 1 x HDMI 1.4 (4K30Hz) 1 x 80PIN (1 x HDMI 2.0 4K 60Hz output, 1 x DP1.4 )
Memory	Dual channel SO-DIMM DDR4-3200MHz Max 32GB
Ethernet	Lan IC 1 x Realtek 8111H Co-Lay Intel Ethernet Connection I226LM10/100/1000Mbps
Wireless	1 x M.2 2230 slot for WIFI_BT module WiFi 802.11 ac
Storage	1 x M.2 2280 size for NVMe / SATA SSD
I/O Ports - Front	1 x DP1.4 1 x HDMI1.4 2 x USB 2.0 2 x USB 3.1 1 x Type-c (USB 3.1) x RJ45 1 x Line out & MIC - In two in one connector 2 x WiFi/BT Antenna
I/O Ports - OPS	1 x 2.5/5.5 DC IN Jack 1 x HDMI2.0 4k60Hz output 1 x DP1.4 5k60Hz output 2 x USB2.0 1 x USB3.0 1 x TTL
Operating System Support	Windows 11 Windows 10
Power Input	12~19V DC IN, 2.5/5.5 DC Jack JAE 80Pin DC IN
Dimensions	119(L) x 180(W) x 30(H) mm
Operating Temperature	-5~45°C
Operating Humidity	10%~90% non-condensing
Storage Temperature	-20~70°C
Operating Humidity	5%~95% non-condensing



### Processor

CPU Intel® Alder Lake-P Processor



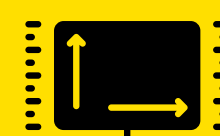
### RAM

Dual Channel SO-DIMM DDR4 -  
3200 MHz Upto 32GB



### Storage

1 x M.2 2280 size for NVMe/SATA SSD



### Dimensions

119(L) x 180(W) x 30(H) mm



### Operating System

Windows 11 / Windows 10



Rear I/O

Front I/O

